

FLOORFINDER **PROTECTIVE** **structure^{FF}**

Economic epoxy resin based coating system with slightly up to medium structured surface for industrial floors with medium mechanical and chemical loads and vertical surfaces.

Application Fields

Industrial floors with light to medium loads

Warehouse & distribution centres

Service areas in public buildings

Technical rooms

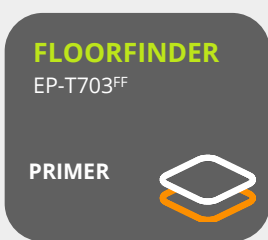
Cellars

Storage rooms

Vertical surfaces

Production

SYSTEM BUILD UP



SYSTEM HIGHLIGHTS

0.5 – 1.2 mm System thickness



Good wear and abrasion resistance



Good chemical resistance (oils, gasoline, diesel, diluted acids)



Economic system build-up



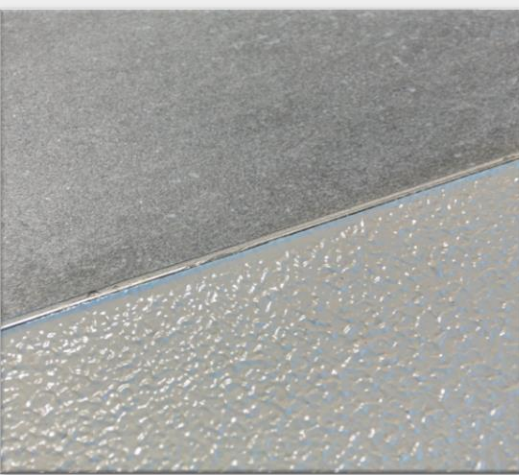
Seamless and liquid tight surface



Available in many colours



Light to medium surface structure



FLOORFINDER *PROTECTIVE structure* ^{FF}

Application and Consumption

Layer	Product	Consumption (kg/m ²)	Sand broadcasting (kg/m ²)	Thickness (mm)	Application
Sealer	FLOORFINDER EP-S600 thix ^{FF} (Optionally fillable with QS 0.1-0.4 mm, 10-20%)	0.2 – 0.3	none	0.2 – 0.3	rubber squeegee, structured roller for finish, medium or coarse
Primer	FLOORFINDER EP-T703 ^{FF}	0.4 – 0.6	none	0.3 – 0.5	notched trowel, roller for finish
Optional: Blocking Primer (≤ 6 CM-%)	FLOORFINDER EP-P210 ^{FF}	0.4 – 0.6	none	ca. 0.3	roller or rubber squeegee
Substrate	Cementitious substrates according to the appropriate standards and approvals must be capable of bearing loads and be free of cracks and voids. Pull-off strength ≥ 1.5 N/mm ² , residual moisture content < 4 %-CM, with higher residual moisture and on substrates with moisture from the backside special measures must be taken or a damp proof membrane must be installed. Substrate preparation e.g. grinding or shot blasting, sweeping and vacuum-cleaning is mandatory. Consumptions are calculated with FLOORFINDER quartz sands and fillers. Usage of other quartz sands and fillers can cause changes of consumption and technical data.				
Note	Detailed application instructions are available upon request or refer to the technical product data sheet.				

Technical Data



Property	Standard	Result
Adhesive strength at T _{NORM}	DIN EN 1542	≥ 3,8 N/mm ² (≥ 1,5 N/mm ²)
Impact resistance	DIN EN ISO 6772-2	4 Nm – no cracks
Chemical resistance	DIN EN 13529	Test liquids DiBT Nr. 1, 3, 10
Abrasion resistance (1000 cycles)	DIN EN ISO 5470-1	70 mg
Shore-Hardness	DIN EN ISO 868	D 73
Water vapour permeability	DIN EN ISO 7783-1 und -2	Class III > 200 m (> 50 m)
Water absorption coefficient	DIEN EN 1062-3	< 0,01 kg/m ² x h ^{0.5} (< 0,1)

Remark: for further information please refer to the product data sheets or contact our technical service. All data are approximate values. Therefore, no liability claims can be derived from the system data sheet. As all FLOORFINDER data sheets are updated on a regular basis it is the user's responsibility to obtain the most recent issue (see www.floorfinder.com.my or contact us directly)– all technical information is subject to change without prior notice. FLOORFINDER products are guaranteed against defective material and manufacture and are sold subject to its standard Terms and Conditions of Sale, copies which can be obtained on request.

Manufacturer:

FLOORFINDER ASIA SDN. BHD. – A division of VIACOR VISION AG, SWITZERLAND | No. 28, Lorong Sungai Puloh 1A/KU6 | Jalan Sungai Puloh | Batu 5 3/4 Kapar | 42100 Klang | Selangor Darul Ehsan | Malaysia | Tel: +603 3290 7644 | info@floorfinder.com.my | www.floorfinder.com.my