

FLOORFINDER *EXPRESS resist* ^{FF}

Fast and low-temperature curing, slip-resistant polyurea coating, for light to medium chemical and medium mechanical loads, with a wide color spectrum.

Application Fields

- Surfaces
- Stairways
- Arcades
- Ramps and spindles in parking garages
- Exterior surfaces
- Loading ramps
- Production areas
- Storage areas

SYSTEM BUILD UP

FLOORFINDER
PU-S691 PFF

PRIMER



FLOORFINDER
UREA S6001 PFF

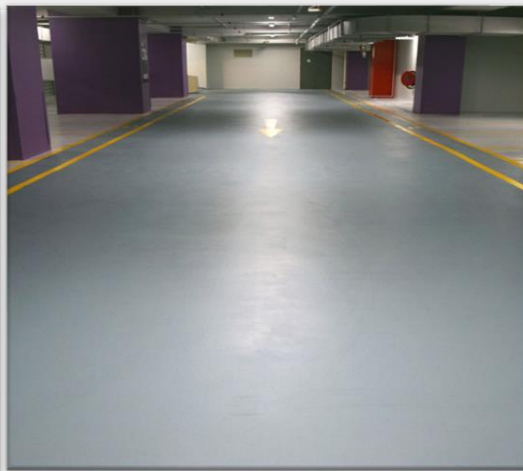
WEAR COAT



SYSTEM HIGHLIGHTS

1.5 – 2.5 mm System thickness

-  UV and colour stable
-  Application and curing within a day, car traffic after 2 days
-  Highest wear resistance acc. to PAT test and others
-  Low odor
-  Solvent free
-  Slight Slip Resistant R11

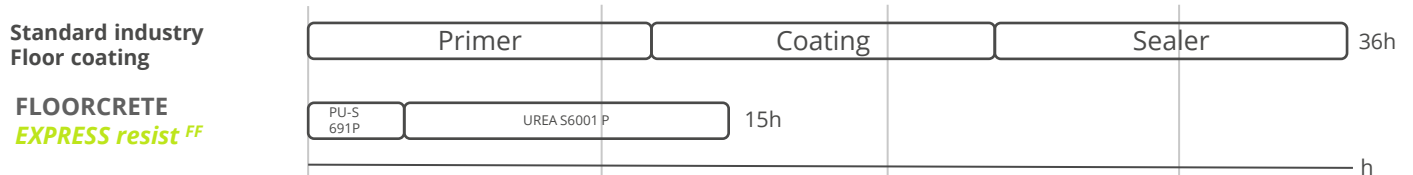


FLOORFINDER *EXPRESS resist* ^{FF}

Application and Consumption

Layer	Product	Consumption (kg/m ²)	Sand broadcasting (kg/m ²)	Thickness (mm)	Application
Wear coat	FLOORFINDER UREA S6001 P ^{FF}	2.5 – 3.0	-	1.5 – 2.5	trowel, long handled squeegee, roller
Primer	FLOORFINDER PU-S691 P ^{FF} (Optional: Filled with 20% QNV0)	0.3 – 0.5 (without filling)	0.5 – 0.8 kg/m ² QNV2-ad (0.3 – 0.8 mm)	0.2 – 0.4 (without filling)	rubber squeegee, roller
Substrate	Cementitious substrates according to the appropriate standards and approvals must be capable of bearing loads and be free of cracks and voids. Pull-off strength ≥ 1.5 N/mm ² , residual moisture content < 4 %-CM, with higher residual moisture and on substrates with moisture from the backside special measures must be taken or a damp proof membrane must be installed. Substrate preparation e.g. grinding or shot blasting, sweeping and vacuum-cleaning is mandatory. Consumptions are calculated with FLOORFINDER quartz sands and fillers. Usage of other quartz sands and fillers can cause changes of consumption and technical data.				
Note	Detailed application instructions are available upon request or refer to the technical product data sheet.				

System timeline (Assumed application conditions: 15°C, 40% rel. Humidity, 200m² area ca.1h application per operation)



Technical Data



Property	Standard	Result
Shore-Hardness	DIN EN ISO 868	After 1d: D65 After 7d: D75
Adhesive tensile strength	DIN EN ISO 4624	≥ 2,5 N/mm ² (concrete failure)
Impact strength	EN 13813, gemessen nach EN ISO 6272-1	≥ IR4
Abrasion resistance (Taber)	DIN ISO 9352	≤ 700 mg (H22, 1000 cycles)
Chemical resistance	EN ISO 2812-4	Resistant against (among others): -Petrol (DIBt medium group 1) -Diesel/Heating oil (3) -Sulfuric acid 20% (10) -Detergent 50% (14)

Remark: for further information please refer to the product data sheets or contact our technical service. All data are approximate values. Therefore, no liability claims can be derived from the system data sheet. As all FLOORFINDER data sheets are updated on a regular basis it is the user's responsibility to obtain the most recent issue (see www.floorfinder.com.my or contact us directly)- all technical information is subject to change without prior notice. FLOORFINDER products are guaranteed against defective material and manufacture and are sold subject to its standard Terms and Conditions of Sale, copies which can be obtained on request.

Manufacturer:

FLOORFINDER ASIA SDN. BHD. – A division of VIACOR VISION AG, SWITZERLAND | No. 28, Lorong Sungai Puloh 1A/KU6 | Jalan Sungai Puloh | Batu 5 3/4 Kapar | 42100 Klang | Selangor Darul Ehsan | Malaysia | Tel: +603 3290 7644 | info@floorfinder.com.my | www.floorfinder.com.my